

160 i VDE Insulated screwdriver for slotted screws, 1 x 5.5 x 125 mm

Kraftform Plus – Series 100 VDE



EAN:	4013288027269	Size:	223x33x33 mm
Part number:	05006120001	Weight:	68 g
Article number:	160 i VDE	Country of origin:	CZ
		Customs tariff number:	82054000

- Insulated blades for secure work at 1,000 volts
- Smooth hard zones for high speed turning, soft grip zones for high torque transfer
- "Take it easy" tool finder: colour coding according to profile and size
- Hexagonal anti-roll feature against rolling away
- Conical blade, Lasertip

Wera VDE screwdriver with multi-component Kraftform Plus handle for fast and smooth work: Hard handle zones for high working speeds, while soft handle zones guarantee a high torque transfer. Individually tested at 10,000 V for safe working at the approved voltage of 1,000 V. The tips of Wera Lasertip screwdrivers are microscopically roughened with laser beams. This rough surface "bites" into the screw head and unintentional slipping is a thing of the past. "Take it easy" tool finder with colour coding by profile and size stamping - for quick and easy identification of the required tool . The hexagon anti-roll protection avoids bits from rolling away annoyingly at the workplace.



Web link

https://products.wera.de/en/screwdrivers_kraftform_plus_series_100_vde_160_i_vde.html

Wera - 160 i VDE
05006120001 - 4013288027269

Wera Werkzeuge GmbH
Korzter Straße 21-25
D-42349 Wuppertal
Tel: +49 (0)2 02 / 40 45-0
E-Mail: info@wera.de

Kraftform Plus – Series 100 VDE

Individually tested



The individual testing at 10,000 volts, in accordance with IEC 60900, ensures safe working with loads up to 1,000 volts.



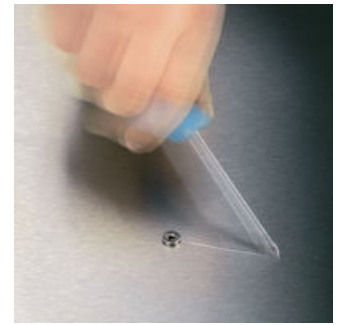
The individual testing at 10,000 volts, in accordance with IEC 60900, ensures safe working with loads up to 1,000 volts.

Impact strength test



Impact strength tested at -40°C, guaranteeing safety even under extreme conditions.

Lasertip prevents slipping out



It happens time and time again that the tip slips out of the screw head when screwdriving, sometimes damaging valuable surfaces or even causing injury. The tips of the Wera Lasertip screwdrivers are microscopically roughened by means of a laser. This rough surface literally "bites" itself firmly into the screw head. Slipping out becomes a thing of the past.

Reduced contact pressure



Wera Lasertip reduces the contact pressure required and enhances force transfer - meaning less screwdriving effort is required. Screwdriving becomes safer and easier.

Prevents hand injuries



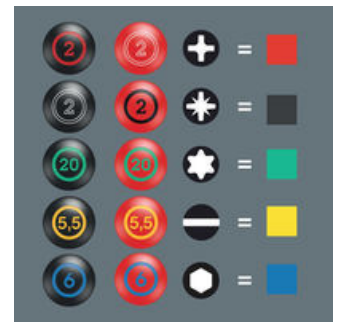
The outstanding design of the Kraftform handle that fits perfectly into the hand prevents hand injuries such as blisters and calluses.

Rapid hand repositioning



The hard materials used for the handle ensure rapid hand repositioning without any danger of the skin "sticking" to the handle. The surrounding hard zones with large diameters glide like wheels through the hand.

"Take it easy" Tool Finder



Screwdrivers with "Take it easy" tool finder: colour coding according to profile and size stamp.

Web link

https://products.wera.de/en/screwdrivers_kraftform_plus_series_100_vde_160_i_vde.html

Wera - 160 i VDE
05006120001 - 4013288027269





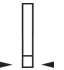

Wera Werkzeuge GmbH
Korzter Straße 21-25
D-42349 Wuppertal
Tel: +49 (0)2 02 / 40 45-0
E-Mail: info@wera.de

160 i VDE Insulated screwdriver for slotted screws, 1 x 5.5 x 125 mm

Kraftform Plus – Series 100 VDE



Further versions in this product family:

	 mm	 mm	 mm	 mm	 inch	 inch
05006100001 ¹⁾	0.4	2.5	80	81	3/32"	3 1/8"
05006105001 ¹⁾	0.5	3.0	100	81	1/8"	4"
05006110001 ¹⁾	0.6	3.5	100	81	9/64"	4"
05006115001	0.8	4.0	100	98	5/32"	4"
05006116001	0.8	4.0	150	98	5/32"	6"
05006120001	1.0	5.5	125	98	7/32"	5"
05006121001	1.0	5.5	200	98	7/32"	8"
05006125001	1.2	6.5	150	105	1/4"	6"
05006126001	1.2	6.5	200	105	1/4"	8"
05006130001	1.2	8.0	175	112	5/16"	7"
05006135001	1.6	8.0	200	112	5/16"	8"
05006140001	1.6	10.0	200	112	3/8"	8"

¹⁾ without Lasertip

Web link

https://products.wera.de/en/screwdrivers_kraftform_plus_series_100_vde_160_i_vde.html

Wera - 160 i VDE

05006120001 - 4013288027269

Wera Werkzeuge GmbH

Korzter Straße 21-25

D-42349 Wuppertal

Tel: +49 (0)2 02 / 40 45-0

E-Mail: info@wera.de